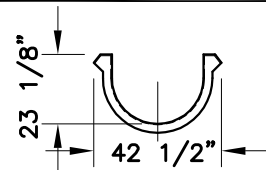


MODEL: SS-30R

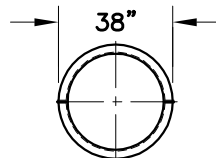
**POOL RECOMMENDATIONS**

Recommended Minimum Pool Area Reserved For Slide Operation Is 10' x 20' With Minimum Water Depth Of 36"

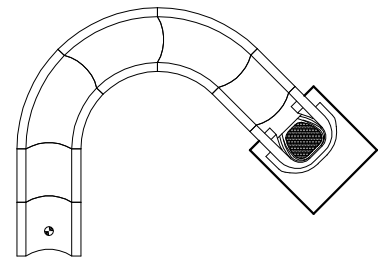
**OPTIONAL CONSIDERATIONS**



32" Open Flume



32" Enclosed Flume



MIRROR IMAGE MODEL: SS-30L

**BASE SPECIFICATIONS**

|                     |         |
|---------------------|---------|
| Ride Length         | 29.78'  |
| Centerline Length   | 26.90'  |
| Starting Elevation  | 5'-0"   |
| Slope               | 20.96%  |
| Flume Width         | 32.00"  |
| Centerline Radius   | 6'-0"   |
| Designed Water Flow | 200 GPM |

CONFIDENTIAL - PROPERTY OF SlideScapes, LLC

*SlideScapes*  
 Custom Residential Water Slides  
 Phone: 770-297-0107 Fax: 770-297-0340  
 800-490-1597  
 www.waterslides.biz

|                           |                 |                            |
|---------------------------|-----------------|----------------------------|
| Standard Model SS-30R     |                 |                            |
| DWG SCALE<br>1/8" = 1'-0" | DRAWN BY<br>RLP | DWG. DATE<br>Jan. 17, 2006 |
| REVISION<br>0             | REVISION DATE   | DWG. NO.<br>SS-30          |